

**REGIONAL
COMMERCIAL
SILVERDALE**

**Suite 102– 743sf
\$1,462 per month**

**Suite 105– 1,667 sf
\$3,211 per month**

**Suite 202– 1025 sf
\$2,018 per month**

**Suite 203-2,000sf
\$3,923 per month**

Office Space For Lease

**Available
Immediately**

Next Door to new YMCA

Close to Kitsap Mall

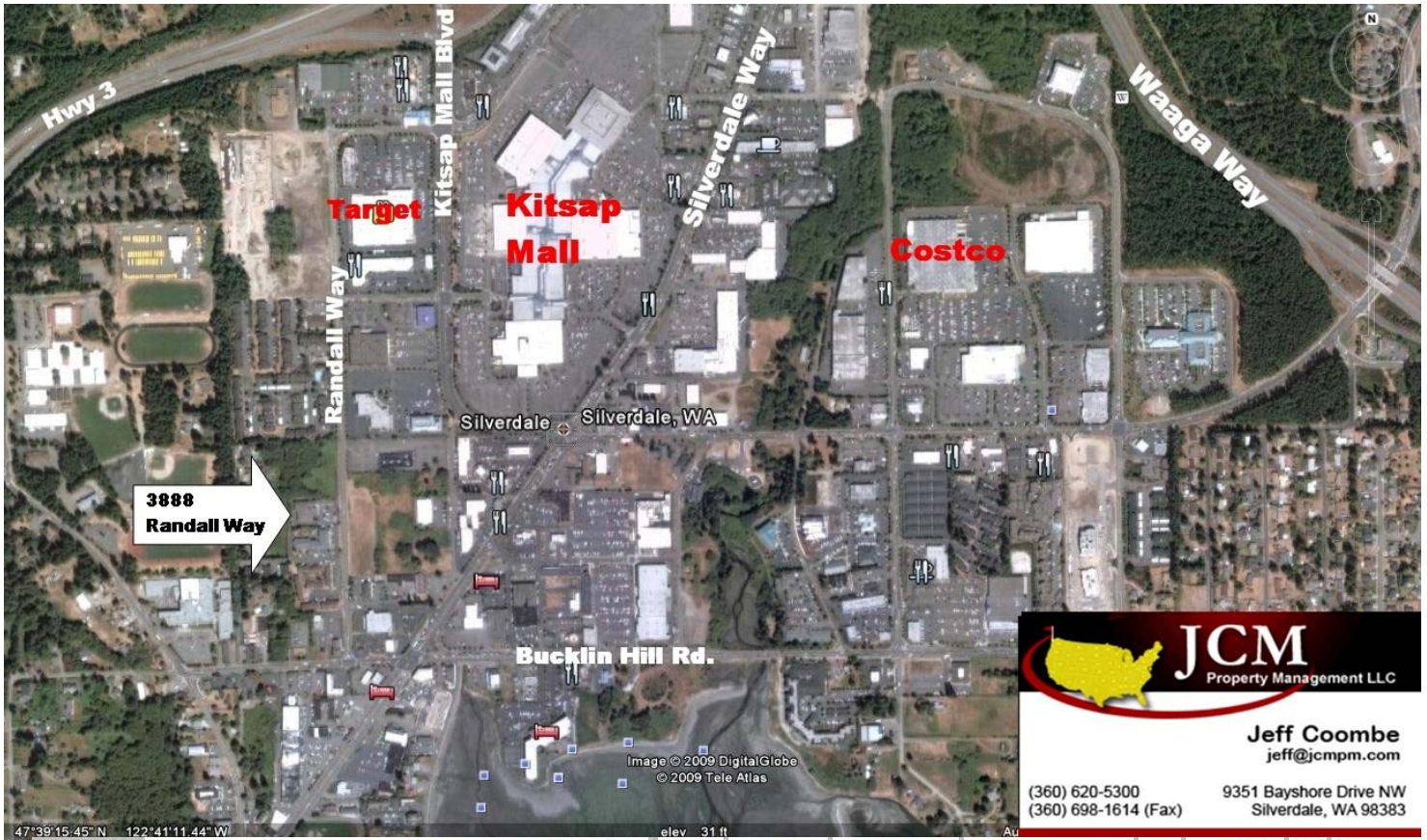


 **JCM**
Property Management LLC

Jeff Coombe
jeff@jcjpm.com

(360) 620-5300
(360) 698-1614 (Fax)

9351 Bayshore Drive NW
Silverdale, WA 98383



JCM
Property Management LLC

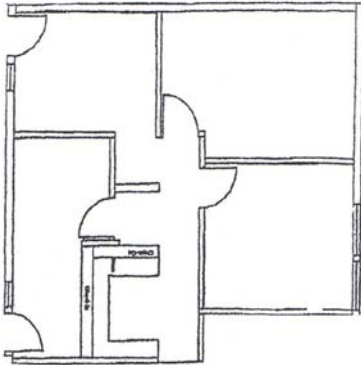
Jeff Coombe
jeff@jcmm.com

(360) 620-5300
(360) 698-1614 (Fax)

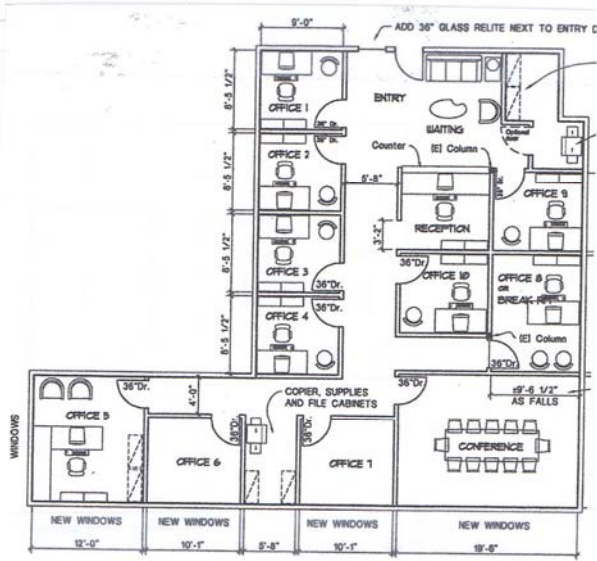
9351 Bayshore Drive NW
Silverdale, WA 98383



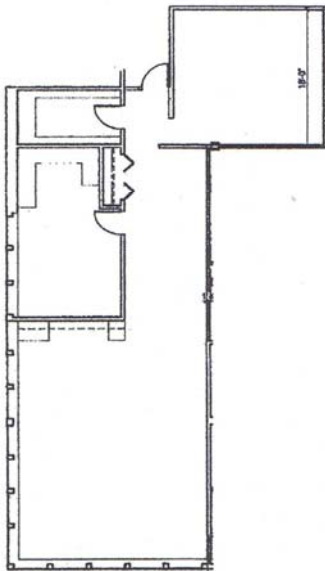
Floor Plans



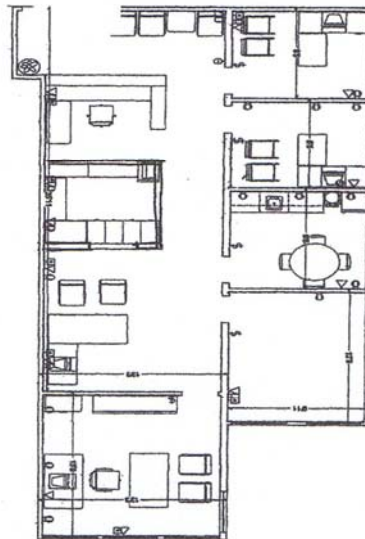
Suite 102 - 743 SF



Suite 203 - 2,000 SF



Suite 105 - 1,667 SF



Suite 202 - 1,025 SF